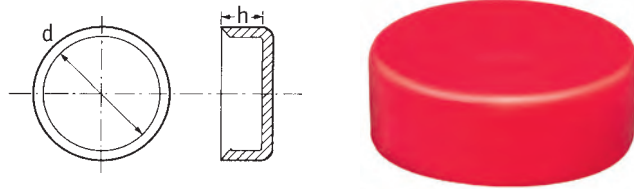


## Rörlock – Korta

SR 1610

Röd LD-polyeten

- Lock för allmänna ändamål
- Stort mängd storlekar



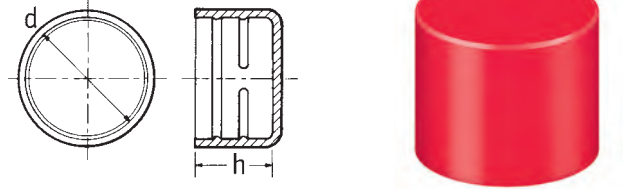
Detaljnr.	Dimensioner (mm)		Antal/förp.
	d	h	
15504*	8.9	8.0	5000
11418	19.0	13.0	5000
11308	22.1	11.0	5000
10888	25.5	13.1	3000
10541	28.5	13.3	2000
10192	31.7	12.8	2000
10389	34.7	12.5	1500
10594	38.0	12.2	1500
10297	41.2	12.8	1200
10152	44.5	12.4	1200
10918	47.0	12.4	1000
11130	50.3	11.7	1000
10539	53.5	12.3	2000
10402	57.0	12.5	700
10557	59.5	12.5	600
10711	63.0	12.6	500
12891	66.4	11.0	1200
10856	69.8	12.1	1500
12310	72.5	12.6	1500
10217	75.5	12.3	1000
11095	79.4	12.7	1000
11045	82.0	12.3	800
12308	85.0	12.2	800

\* Svart PVC

## Räfflade lock

SR 1046

Röd LD-polyeten



Detaljnr.	Dimensioner (mm)		Antal/förp.
	d	h	
12773	10.2	16.0	10000
12774	12.0	16.0	10000
12775	15.0	20.0	5000
12776	16.0	20.0	5000
12849	18.0	20.0	2500
12777	20.0	20.0	2000
12850	22.0	20.0	2500
12779	25.0	20.0	2000
12780	28.0	26.5	1000
12846	30.0	26.5	800
12781	35.0	26.5	800
12782	38.0	27.0	500
12982	54.0	27.8	300
12960*	110.0	34.6	150

\* Levereras i gul LD-polyeten

## Rörlock – Långa

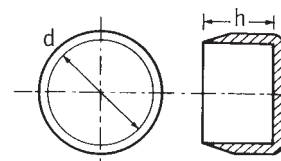
SR 1620

Röd LD-polyeten

- Tättslutande på grund av extra djup och kilkant
- Utformningen förhindrar oavsiktligt öppnande



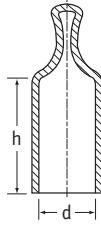
Detaljnr.	Dimensioner (mm)		Antal/förp.
	d	h	
12549	25.0	37.0	1000
12551	31.0	39.0	2000
12532	43.0	43.0	800
12554	57.0	44.0	700
12556	70.0	47.0	400
12558	81.5	54.0	250



# Lock och Pluggar

## Lock med tumgrepp

SR 1066



Svart flexibel PVC

Typ 1= Svart flexibel PVC 80° Shore

Typ 2= Röd flexibel PVC 60° Shore.

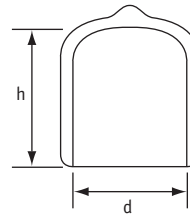
- Idealiska för allmänna skyddsändamål
- Dragtunga för lätt montering och demontering!

Typ 2: Röd flexibel PVC

Detaljnr.	Till gänga			Dimensioner (mm)		Antal/förp.
	Metrisk	BSP	UNF	d	h	
PCWA-0036-013	M4	-	-	3.6	13.0	5000
PCWA-0048-013	M4	-	-	4.8	13.0	5000
PCWA-0053-013	M6	-	7/32"	5.3	13.0	5000
PCWA-0061-013	-	-	1/4"	6.1	13.0	5000
PCWA-0075-013	-	-	-	7.5	13.0	5000
PCWA-0075-025	-	-	-	7.5	25.0	5000
PCWA-0077-013	M8	-	5/16"	7.7	13.0	7500
PCWA-0077-025	-	-	-	7.7	25.0	5000
PCWA-0087-013	-	-	-	8.7	13.0	5000
PCWA-0087-025	-	-	-	8.7	25.0	5000
PCWA-0093-013	M10	1/8"	3/8"	9.3	13.0	2500
PCWA-0093-025	-	-	-	9.3	25.0	3000
PCWA-0097-013	-	-	-	9.7	13.0	2500
PCWA-0097-025	-	-	-	9.7	25.0	2500
PCWA-0108-013	-	-	7/16"	10.8	13.0	5000
PCWA-0108-025	-	-	-	10.8	25.0	5000
PCWA-0111-013	-	-	-	11.1	13.0	2500
PCWA-0111-025	-	-	-	11.1	25.0	5000
PCWA-0119-013	M12	-	1/2"	11.9	13.0	5000
PCWA-0119-025	-	-	-	11.9	25.0	3000
PCWA-0124-025	-	1/4"	1/2"	12.4	25.0	5000
PCWA-0124-013	-	1/4"	1/2"	12.4	13.0	5000
PCWA-0132-013	M14	-	17/32"	13.2	13.0	5000
PCWA-0132-025	-	-	-	13.2	25.0	2500
PCWA-0143-025	M15	-	9/16"	14.3	25.0	2500
PCWA-0153-013	M16	-	-	15.3	13.0	2500
PCWA-0153-025	-	-	-	15.3	25.0	2000
PCWA-0159-025	-	3/8"	5/8"	15.9	25.0	2000
PCWA-0163-013	M18	-	11/16"	16.3	13.0	2500
PCWA-0163-025	-	-	-	16.3	25.0	1250
PCWA-0174-013	M18	-	-	17.4	13.0	2500
PCWA-0174-025	M18	-	-	17.4	25.0	2500
PCWA-0188-013	M20	-	3/4"	18.8	13.0	2500
PCWA-0188-025	-	-	-	18.8	25.0	1250
PCWA-0200-013	-	-	-	20.0	13.0	2500
PCWA-0200-025	-	-	-	20.0	25.0	2500
PCWA-0206-013	M22	1/2"	13/16"	20.6	13.0	2500
PCWA-0206-025	-	-	-	20.6	25.0	2000
PCWA-0220-025	-	5/8"	7/8"	22.0	25.0	1500
PCWA-0238-013	-	-	-	23.8	13.0	1500
PCWA-0238-025	-	-	-	23.8	25.0	1500
PCWA-0246-013	M25	-	-	24.6	13.0	1500
PCWA-0246-025	M25	-	-	24.6	25.0	1500
PCWA-0251-025	M26	-	1"	25.1	25.0	1500
PCWA-0269-025	-	-	-	26.9	25.0	1000
PCWA-0286-025	M30	7/8"	1 1/8"	28.6	25.0	1500
PCWA-0286-038	M30	7/8"	1 1/8"	28.6	38.0	1500
PCWA-0312-038	M32	1"	1 1/4"	31.2	38.0	350
PCWA-0349-025	M35	-	1 3/8"	34.9	25.0	350
PCWA-0349-038	M35	-	1 3/8"	34.9	38.0	350
PCWA-0381-038	M39	-	1 1/2"	38.1	38.0	350
PCWA-0381-050	M39	-	1 1/2"	38.1	50.0	350
PCWA-0408-038	-	-	1 5/8"	40.8	38.0	350
PCWA-0413-038	M42	1 1/4"	-	41.3	38.0	350
PCWA-0413-050	M42	1 1/4"	-	41.3	50.0	350
PCWA-0445-038	M45	1 3/8"	-	44.5	38.0	350
PCWA-0445-050	M45	1 3/8"	-	44.5	50.0	350
PCWA-0508-050	-	-	2"	50.8	50.0	200

Detaljnr.	Till gänga			Dimensioner (mm)		Antal/förp.
	Metrisk	BSP	UNF	d	h	
PCZF-0075-013	-	-	-	7.5	13.0	5000
PCZF-0075-025	M8	-	-	7.5	25.0	5000
PCZF-0077-013	-	-	5/16"	7.7	13.0	7500
PCZF-0077-025	-	-	-	7.7	25.0	5000
PCZF-0087-013	-	-	-	8.7	13.0	5000
PCZF-0087-025	M10	-	-	8.7	13.0	5000
PCZF-0093-013	-	1/8"	3/8"	9.3	13.0	5000
PCZF-0093-025	-	-	-	9.3	25.0	5000
PCZF-0097-013	-	-	-	9.7	13.0	2500
PCZF-0097-025	-	-	-	9.7	25.0	2500
PCZF-0108-013	-	-	7/16"	10.8	13.0	5000
PCZF-0108-025	-	-	-	10.8	25.0	5000
PCZF-0111-013	-	-	-	11.1	13.0	2500
PCZF-0111-025	M12	-	-	11.1	25.0	2500
PCZF-0119-013	-	-	1/2"	11.9	13.0	5000
PCZF-0119-025	-	-	-	11.9	25.0	5000
PCZF-0124-013	-	1/4"	1/2"	12.4	13.0	5000
PCZF-0124-025	M14	1/4"	1/2"	12.4	25.0	5000
PCZF-0132-013	-	-	17/32"	13.2	13.0	5000
PCZF-0132-025	M15	-	9/16"	13.2	25.0	5000
PCZF-0143-025	M16	-	-	14.3	25.0	2500
PCZF-0153-013	-	-	-	15.3	13.0	2500
PCZF-0153-025	-	-	-	15.3	25.0	2000
PCZF-0159-025	M18	-	5/8"	15.9	25.0	2000
PCZF-0163-013	-	-	11/16"	16.3	13.0	2500
PCZF-0163-025	M18	-	-	16.3	25.0	1250
PCZF-0174-013	M18	-	-	17.4	13.0	2500
PCZF-0174-025	M20	-	-	17.4	25.0	2500
PCZF-0188-013	-	-	3/4"	18.8	13.0	2500
PCZF-0188-025	-	-	-	18.8	25.0	1250
PCZF-0200-013	-	-	-	20.0	13.0	2500
PCZF-0200-025	M22	-	-	20.0	25.0	2500
PCZF-0206-013	-	1/2"	13/16"	20.6	13.0	2500
PCZF-0206-025	-	-	-	20.6	25.0	2000
PCZF-0220-025	-	5/8"	7/8"	22.0	25.0	2000
PCZF-0238-013	-	-	-	23.8	13.0	1500
PCZF-0238-025	M25	-	-	23.8	25.0	1500
PCZF-0246-013	M25	-	-	24.6	13.0	1500
PCZF-0246-025	M26	-	-	24.6	25.0	1500
PCZF-0251-025	-	-	1"	25.1	25.0	1500
PCZF-0269-025	M30	-	-	26.9	25.0	1500
PCZF-0286-025	M30	7/8"	1 1/8"	28.6	25.0	1500
PCZF-0286-038	M32	7/8"	1 1/8"	28.6	38.0	1500
PCZF-0312-038	M35	1"	1 1/4"	31.2	38.0	500
PCZF-0349-025	M35	-	1 3/8"	34.9	25.0	350
PCZF-0349-038	M39	-	1 3/8"	34.9	38.0	350
PCZF-0381-038	M39	-	1 1/2"	38.1	38.0	350
PCZF-0381-050	M42	-	1 1/2"	38.1	50.0	350
PCZF-0413-038	M42	1 1/4"	-	41.3	38.0	350
PCZF-0413-050	M42	1 1/4"	-	41.3	50.0	350
PCZF-0445-038	M45	1 3/8"	-	44.5	38.0	350
PCZF-0445-050	M45	1 3/8"	-	44.5	50.0	350
PCZF-0508-050	-	-	2"	50.8	50.0	200

## Doppgjutna skyddslock FORTSÄTTNINGSR 1044

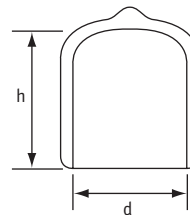


Detaljnr.	Till gänga			Dimensioner (mm)		Antal/förp
	Metrisk	BSP	UNF	d	h	
FCWA-0302-050	-	7/8"	-	30.2	50.0	750
FCWA-0318-025	-	1"	1 1/4"	31.8	25.0	1000
FCWA-0318-038	-	1"	1 1/4"	31.8	38.0	700
FCWA-0318-050	-	1"	1 1/4"	31.8	50.0	750
FCWA-0349-025	M35	-	1 3/8"	34.9	25.0	1000
FCWA-0349-038	M35	-	1 3/8"	34.9	38.0	650
FCWA-0349-050	M35	-	1 3/8"	34.9	50.0	500
FCWA-0381-025	M39	-	1 1/2"	38.1	25.0	1000
FCWA-0381-038	M39	-	1 1/2"	38.1	38.0	600
FCWA-0381-050	M39	-	1 1/2"	38.1	50.0	500
FCWA-0413-025	M42	1 1/4"	-	41.3	25.0	900
FCWA-0413-038	M42	1 1/4"	-	41.3	38.0	500
FCWA-0413-050	M42	1 1/4"	-	41.3	50.0	400
FCWA-0445-025	M45	1 3/8"	-	44.5	25.0	500
FCWA-0445-038	M45	1 3/8"	-	44.5	38.0	500
FCWA-0445-050	M45	1 3/8"	-	44.5	50.0	400
FCWA-0476-025	M48	1 1/2"	-	47.6	25.0	625
FCWA-0476-038	M48	1 1/2"	-	47.6	38.0	400

Detaljnr.	Till gänga			Dimensioner (mm)		Antal/förp
	Metrisk	BSP	UNF	d	h	
FCWA-0476-050	-	1 1/2"	-	47.6	50.0	350
FCWA-0508-025	-	-	2"	50.8	25.0	550
FCWA-0508-038	-	-	2"	50.8	38.0	400
FCWA-0508-050	-	-	2"	50.8	50.0	200
FCWA-0539-038	-	1 3/4"	-	53.9	38.0	400
FCWA-0539-050	-	1 3/4"	-	53.9	50.0	200
FCWA-0572-038	M58	2 1/4"	-	57.2	38.0	250
FCWA-0572-050	M58	2 1/4"	-	57.2	50.0	200
FCWA-0603-038	-	2 3/8"	-	60.3	38.0	250
FCWA-0603-050	-	2 3/8"	-	60.3	50.0	250
FCWA-0635-038	-	2 1/2"	-	63.5	38.0	250
FCWA-0635-050	-	2 1/2"	-	63.5	50.0	125
FCWA-0667-038	-	-	-	66.7	38.0	150
FCWA-0667-050	-	-	-	66.7	50.0	125
FCWA-0698-038	-	-	-	69.8	38.0	250
FCWA-0698-050	-	-	-	69.8	50.0	200
FCWA-0762-038	-	3"	-	76.2	38.0	200
FCWA-0762-050	-	3"	-	76.2	50.0	150

### Typ 2: Röd flexibel PVC

- Flexibel och tålig PVC
- Många olika användningsområden



Detaljnr.	Till gänga			Dimensioner (mm)		Antal/förp
	Metrisk	BSP	UNF	d	h	
FCZF-0077-013	M8	-	5/16"	7.7	13.0	5000
FCZF-0079-013	-	-	-	7.9	13.0	5000
FCZF-0083-013	-	-	-	8.3	13.0	5000
FCZF-0087-013	-	-	-	8.7	13.0	5000
FCZF-0095-013	-	-	-	9.5	13.0	5000
FCZF-0103-013	-	-	-	10.3	13.0	5000
FCZF-0111-013	M12	-	7/16"	11.1	13.0	5000
FCZF-0119-013	M12	-	1/2"	11.9	13.0	5000
FCZF-0127-013	M14	1/4"	1/2"	12.7	13.0	5000
FCZF-0138-013	M14	-	-	13.8	13.0	5000
FCZF-0143-013	M15	-	-	14.3	13.0	5000
FCZF-0152-013	-	-	-	15.2	13.0	5000
FCZF-0159-013	M16	3/8"	-	15.9	13.0	5000
FCZF-0174-013	M18	-	-	17.4	13.0	2500
FCZF-0191-025	M20	-	3/4"	19.1	25.0	2500
FCZF-0206-025	-	1/2"	-	20.6	25.0	1250
FCZF-0214-025	M22	-	-	21.4	25.0	1250
FCZF-0222-025	-	5/8"	7/8"	22.2	25.0	1250

Detaljnr.	Till gänga			Dimensioner (mm)		Antal/förp
	Metric	BSP	UNF	d	h	
FCZF-0238-025	M24	-	-	23.8	25.0	1250
FCZF-0246-025	M25	-	-	24.6	25.0	1000
FCZF-0254-025	-	-	1"	25.4	25.0	1000
FCZF-0263-025	M27	3/4"	-	26.3	25.0	1250
FCZF-0286-025	M30	7/8"	1 1/8"	28.6	25.0	1000
FCZF-0302-025	-	7/8"	-	30.2	25.0	1000
FCZF-0318-025	-	1"	1 1/4"	31.8	25.0	1000
FCZF-0349-025	M35	-	1 3/8"	34.9	25.0	1000
FCZF-0381-025	M39	-	1 1/2"	38.1	25.0	1000
FCZF-0413-025	M42	1 1/4"	-	41.3	25.0	900
FCZF-0445-025	M45	1 3/8"	-	44.5	25.0	500
FCZF-0476-038	M48	1 1/2"	-	47.6	38.0	400
FCZF-0508-038	-	-	2"	50.8	38.0	400
FCZF-0539-038	M-	1 3/4"	-	53.9	38.0	400
FCZF-0572-038	M58	-	-	57.2	38.0	250
FCZF-0603-038	-	2 3/8"	-	60.3	38.0	250
FCZF-0635-038	-	2 1/2"	-	63.5	38.0	250
FCZF-0698-050	-	-	-	69.8	50.0	200

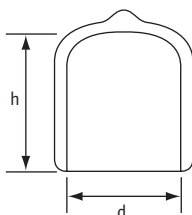
# Över 1400 nyheter

## Doppgjutna skyddslock

SR 1044

Svart flexibel PVC

- Flexibel och tålig PVC
- Har många olika användningsområden



Detaljnr.	Till gänga			Dimensioner (mm)		Antal/förp.
	Metrisk	BSP	UNF	d	h	
FCWA-0020-013	-	-	-	2.0	13.0	5000
FCWA-0028-013	M3	-	-	2.8	13.0	5000
FCWA-0032-013	-	-	-	3.2	13.0	5000
FCWA-0036-013	M4	-	-	3.6	13.0	5000
FCWA-0036-019	M4	-	-	3.6	19.0	5000
FCWA-0036-025	M4	-	-	3.6	25.0	5000
FCWA-0039-013	-	-	-	3.9	13.0	5000
FCWA-0039-019	-	-	-	3.9	19.0	5000
FCWA-0039-025	-	-	-	3.9	25.0	5000
FCWA-0044-013	M5	-	3/16"	4.4	13.0	5000
FCWA-0044-019	M5	-	3/16"	4.4	19.0	5000
FCWA-0044-025	M5	-	3/16"	4.4	25.0	5000
FCWA-0048-013	M5	-	3/16"	4.8	13.0	5000
FCWA-0048-019	M5	-	3/16"	4.8	19.0	5000
FCWA-0048-025	M5	-	3/16"	4.8	25.0	5000
FCWA-0052-013	-	-	-	5.2	13.0	5000
FCWA-0052-019	-	-	-	5.2	19.0	5000
FCWA-0052-025	-	-	-	5.2	25.0	5000
FCWA-0055-013	-	-	-	5.5	13.0	5000
FCWA-0055-019	-	-	-	5.5	19.0	5000
FCWA-0055-025	-	-	-	5.5	25.0	5000
FCWA-0059-013	M6	-	1/4"	5.9	13.0	5000
FCWA-0059-019	M6	-	1/4"	5.9	19.0	5000
FCWA-0059-025	M6	-	1/4"	5.9	25.0	5000
FCWA-0064-013	-	-	-	6.4	13.0	5000
FCWA-0064-019	-	-	-	6.4	19.0	5000
FCWA-0064-025	-	-	-	6.4	25.0	5000
FCWA-0070-013	-	-	-	7.0	13.0	5000
FCWA-0070-019	-	-	-	7.0	19.0	5000
FCWA-0077-013	M8	-	5/16"	7.7	13.0	5000
FCWA-0077-019	M8	-	5/16"	7.7	19.0	5000
FCWA-0070-025	-	-	-	7.0	25.0	5000
FCWA-0077-025	M8	-	5/16"	7.7	25.0	5000
FCWA-0079-013	-	-	-	7.9	13.0	5000
FCWA-0079-019	M8	-	5/16"	7.9	19.0	5000
FCWA-0079-025	M8	-	5/16"	7.9	25.0	5000
FCWA-0083-013	-	-	-	8.3	13.0	5000
FCWA-0083-019	-	-	-	8.3	19.0	5000
FCWA-0083-025	-	-	-	8.3	25.0	5000
FCWA-0087-013	-	-	-	8.7	13.0	5000
FCWA-0087-019	-	-	-	8.7	19.0	5000
FCWA-0087-025	-	-	-	8.7	25.0	5000
FCWA-0095-013	M10	1/8"	3/8"	9.5	13.0	5000
FCWA-0095-019	M10	1/8"	3/8"	9.5	19.0	5000
FCWA-0095-025	M10	1/8"	3/8"	9.5	25.0	5000
FCWA-0103-013	-	-	-	10.3	13.0	5000
FCWA-0103-019	-	-	-	10.3	19.0	5000
FCWA-0103-025	-	-	-	10.3	25.0	2500
FCWA-0111-013	M12	-	7/16"	11.1	13.0	5000
FCWA-0111-019	M12	-	7/16"	11.1	19.0	5000
FCWA-0111-025	M12	-	7/16"	11.1	25.0	2500
FCWA-0119-013	M12	-	1/2"	11.9	13.0	5000
FCWA-0119-019	M12	-	1/2"	11.9	19.0	5000
FCWA-0119-025	M12	-	1/2"	11.9	25.0	2500
FCWA-0127-013	-	1/4"	1/2"	12.7	13.0	5000

Detaljnr.	Till gänga			Dimensioner (mm)		Antal/förp.
	Metrisk	BSP	UNF	d	h	
FCWA-0127-019	-	1/4"	1/2"	12.7	19.0	5000
FCWA-0127-025	-	1/4"	1/2"	12.7	25.0	2500
FCWA-0135-013	M14	-	-	13.5	13.0	5000
FCWA-0135-019	M14	-	-	13.5	19.0	5000
FCWA-0135-025	M14	-	-	13.5	25.0	5000
FCWA-0138-013	M14	-	-	13.8	13.0	5000
FCWA-0138-019	M14	-	-	13.8	19.0	2500
FCWA-0138-025	M14	-	-	13.8	25.0	2500
FCWA-0143-013	M15	-	-	14.3	13.0	5000
FCWA-0143-019	M15	-	-	14.3	19.0	2500
FCWA-0143-025	M15	-	-	14.3	25.0	5000
FCWA-0152-013	-	-	-	15.2	13.0	5000
FCWA-0152-019	-	-	-	15.2	19.0	5000
FCWA-0152-025	-	-	-	15.2	25.0	5000
FCWA-0159-013	M16	3/8"	-	15.9	13.0	5000
FCWA-0159-019	M16	3/8"	-	15.9	19.0	2500
FCWA-0159-025	M16	3/8"	-	15.9	25.0	2500
FCWA-0174-013	M18	-	-	17.4	13.0	2500
FCWA-0174-019	M18	-	-	17.4	19.0	2000
FCWA-0174-025	M18	-	-	17.4	25.0	2500
FCWA-0191-013	M20	-	3/4"	19.1	13.0	2500
FCWA-0191-019	M20	-	3/4"	19.1	19.0	2500
FCWA-0191-025	M20	-	3/4"	19.1	25.0	2500
FCWA-0199-013	-	-	-	19.9	13.0	2500
FCWA-0199-019	-	-	-	19.9	19.0	2500
FCWA-0199-025	-	-	-	19.9	25.0	2500
FCWA-0206-013	-	1/2"	-	20.6	13.0	2500
FCWA-0206-025	-	1/2"	-	20.6	25.0	1250
FCWA-0206-038	-	1/2"	-	20.6	38.0	1000
FCWA-0214-013	M22	-	-	21.4	13.0	2500
FCWA-0214-025	M22	-	-	21.4	25.0	1250
FCWA-0214-038	M22	-	-	21.4	38.0	1200
FCWA-0222-013	-	5/8"	7/8"	22.2	13.0	5000
FCWA-0222-025	-	5/8"	7/8"	22.2	25.0	2500
FCWA-0222-038	-	5/8"	7/8"	22.2	38.0	1250
FCWA-0238-013	M24	-	-	23.8	13.0	2500
FCWA-0238-025	M24	-	-	23.8	25.0	1250
FCWA-0238-038	M24	-	-	23.8	38.0	1000
FCWA-0246-013	M25	-	-	24.6	13.0	2500
FCWA-0246-025	M25	-	-	24.6	25.0	1000
FCWA-0246-038	M25	-	-	24.6	38.0	1000
FCWA-0254-013	-	-	1"	25.4	13.0	2500
FCWA-0254-025	-	-	1"	25.4	25.0	1000
FCWA-0254-038	-	-	1"	25.4	38.0	1250
FCWA-0263-013	M27	3/4"	-	26.3	13.0	2500
FCWA-0263-025	M27	3/4"	-	26.3	25.0	1250
FCWA-0263-038	M27	3/4"	-	26.3	38.0	1000
FCWA-0269-013	M27	-	-	26.9	13.0	3000
FCWA-0269-025	M27	-	-	26.9	25.0	1500
FCWA-0269-038	M27	-	-	26.9	38.0	1250
FCWA-0286-025	M30	7/8"	1 1/8"	28.6	25.0	1000
FCWA-0286-038	M30	7/8"	1 1/8"	28.6	38.0	500
FCWA-0286-050	M30	7/8"	1 1/8"	28.6	50.0	500
FCWA-0302-025	-	7/8"	-	30.2	25.0	1000
FCWA-0302-038	-	7/8"	-	30.2	38.0	1000

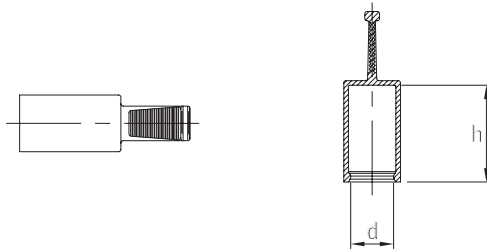
FORTSÄTTNING PÅ NÄSTA SIDA

## Plugg med dragtunga

SR 6110

Gul EVA

- Dragtungan gör pluggen lätt att montera och demontera
- Skyddar mot smuts
- Flexibel



Detaljnr.	Dimensioner (mm)		Antal/förp.
	d	h	
464885	4.0	21.0	500
464886	5.0	20.0	500
464887	6.0	20.0	500
464888	8.0	20.0	500
464889	9.0	20.0	500
464890	10.0	20.0	500
464891	11.0	20.0	500
464892	12.0	20.0	500
464893	13.0	20.0	500
464894	14.0	20.0	500
464895	15.0	20.0	500
464896	16.0	20.0	500
464897	18.0	20.0	500
464898	20.0	20.0	500
464899	20.0	30.0	500
464900	24.0	20.0	500

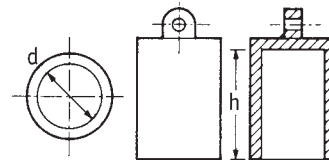
## Flexibla huvar

SR 1020

Svart PVC eller Grön Vinyl

Svart PVC

- Mycket rivtåliga
- Grön Vinyl
- Tål oljor eller fetter



Detaljnr.		Dimensioner (mm)		Antal/förp.
Svart PVC	Grön Vinyl	d	h	
12696	12226	5.0	23.5	10000
12697	12227	6.0	25.0	10000
12698	12228	7.0	24.0	5000
12699	12229	8.0	24.5	8000
12700	12230	9.0	25.0	3500
12701	12231	10.0	29.5	2500
12702	12232	11.0	29.0	4500
12703	12233	12.0	29.0	4000
12704	12234	13.0	29.0	3500
12705	12235	14.0	29.0	1500
12706	12236	15.0	29.5	2500
12707	12237	16.0	28.0	2500
12708	12238	17.0	29.5	2000
12709	12239	18.0	28.5	2000
12710	12240	19.0	29.5	2000
12711	12241	20.0	28.5	1600
12712	12242	21.0	34.5	1300
12713	12243	22.0	34.0	1200
12714	12244	23.0	34.5	1000
12715	12245	24.0	34.0	1000
12716	12246	25.0	34.5	1000
12717	12247	26.0	34.5	900
12718	12248	27.0	33.5	900
12719	12249	28.0	33.5	800
12720	12250	29.0	35.0	800
12721	12251	30.0	34.5	600

## Skyddande hylsa för styrskaft

SR 1079

### Typ 1 . Gul LDPE

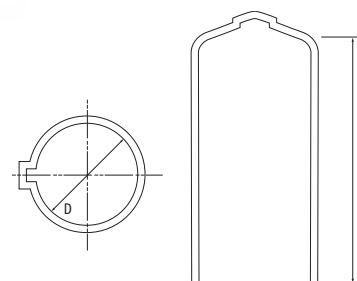
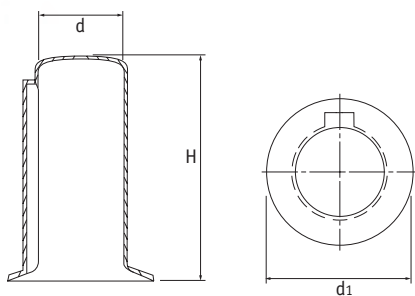
- Passar styrskaft för DIN 748, IEC 600-72 och ISO R775
- Skydd och maskering av styrskaft såväl som omgivande lager

### Typ 2 -Gul flexibel PVC

- Passar styrskaft för DIN 748, IEC 600-72 och ISO R775
- Slitstark och beständig mot olja och de flesta kemikalier



Utökad  
sortiment



### Typ 1 . Gul LDPE

Detaljnr.	Till axel- diameter (mm)	Dimensioner (mm)		Antal/förp.
		d1	H	
467003	9.0	14.5	25.0	500
467004	10.0	16.0	30.0	500
467005	11.0	17.5	30.0	500
467006	14.0	22.5	35.0	500
467007	15.0	25.5	35.0	500
467008	16.0	25.5	50.0	500
467009	19.0	30.5	50.0	400
467010	20.0	32.0	60.0	250
467011	22.0	35.5	60.0	250
467012	24.0	38.5	60.0	200
467013	25.0	40.0	70.0	200
467014	28.0	45.0	70.0	150
467015	30.0	48.0	95.0	100
467016	32.0	51.0	95.0	100
467017	35.0	56.0	95.0	100
467018	38.0	61.0	95.0	100
467019	42.0	67.0	130.0	75
467020	45.0	72.0	130.0	50
467021	48.0	77.0	130.0	100
467022	55.0	88.0	130.0	100
467023	60.0	96.0	165.0	75
467024	65.0	104.0	165.0	75
467025	70.0	108.0	165.0	75
467026	75.0	112.0	165.0	75

### Typ 2 – Gul flexibel PVC

Detaljnr.	Till axel- diameter (mm)	Dimensioner (mm)		Antal/förp.
		D	H	
SPWJ-09	9.0	9.0	50.0	1500
SPWJ-10	10.0	10.0	50.0	1500
SPWJ-11	11.0	11.0	50.0	1500
SPWJ-14	14.0	14.0	50.0	1500
SPWJ-15	15.0	15.0	50.0	1000
SPWJ-16	16.0	16.0	60.0	1000
SPWJ-19	19.0	19.0	60.0	1000
SPWJ-20	20.0	20.0	60.0	1000
SPWJ-22	22.0	22.0	70.0	750
SPWJ-24	24.0	24.0	70.0	750
SPWJ-25	25.0	25.0	70.0	500
SPWJ-28	28.0	28.0	80.0	500
SPWJ-30	30.0	30.0	80.0	400
SPWJ-32	32.0	32.0	100.0	250
SPWJ-35	35.0	35.0	100.0	200
SPWJ-38	38.0	38.0	100.0	200
SPWJ-42	42.0	42.0	130.0	150
SPWJ-45	45.0	45.0	130.0	150
SPWJ-48	48.0	48.0	130.0	100
SPWJ-55	55.0	55.0	130.0	100
SPWJ-60	60.0	60.0	140.0	100
SPWJ-65	65.0	65.0	140.0	100
SPWJ-70	70.0	70.0	140.0	100
SPWJ-75	75.0	75.0	140.0	100

## Universalkåpor

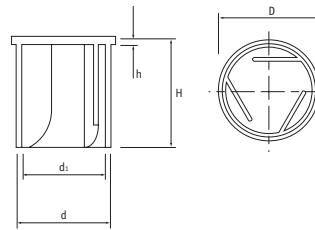
SR 1056

Naturfärgad LD-polyeten

- Unik flänsdesign gör att varje kåpa passar flera olika tappdiametrar

Detaljnr.	Typ	Tappstorlek (mm)	Dimensioner (mm)					Antal/förp.
			d <sub>1</sub>	d	D	h	H	
466964	1	6.5-8.0	10.0	12.0	14.0	1.5	22.0	500
466965	1	8.0-9.0	11.0	13.0	15.0	1.5	22.0	500
466966	1	9.0-10.5	12.5	14.5	16.5	1.5	22.0	250
466967	1	11.0-13.0	16.0	18.0	20.0	1.5	22.0	250
466968	1	14.0-16.0	18.0	20.0	22.0	1.5	22.0	250
466969	1	17.0-19.0	22.0	24.0	26.0	1.5	22.0	100
466970	1	20.0-22.0	25.0	27.0	29.0	1.5	25.0	100
466971	1	24.0-26.0	29.0	31.0	33.0	1.5	30.0	100
466972	1	28.0-30.0	33.0	35.0	37.0	1.5	34.0	100
10220*	2	6.5-8.0	10.0	11.0	-	-	31.5	5000
10221	2	8.0-9.0	11.0	12.0	-	-	20.5	5000
10223	2	9.0-10.0	12.0	13.0	-	-	20.5	5000

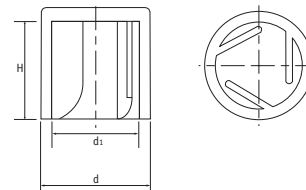
\* Denna storlek har avfasade hörn



Typ 1



Typ 1 med grepp



Typ 2

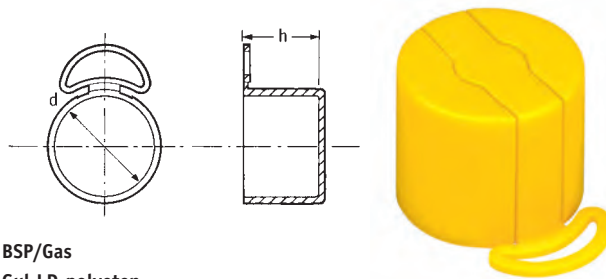


Typ 2 utan grepp

## Lock med rivtunga

SR 1022

- Snabb montering och demontering
- Enkel rivtunga för snabb borttagning



BSP/Gas

Gul LD-polyeten

Detaljnr	Till gänga	Dimensioner (mm)		Antal/förp.
		h	d	
10351	1/4" x 19	11.0	13.0	10000
10492	3/8" x 19	12.0	16.0	5000
10308*	1/2" x 14	15.0	21.2	4000
12373*†	5/8" x 14	18.5	23.0	3000
10701	3/4" x 14	23.8	26.3	1500
12375*	7/8" x 14	25.0	29.5	1500
12376*	1" x 11	18.0	34.0	1500

\* Annan typ av rivtunga

† Finns med säkerhetsventilerande hål

UNF/JIC

Blå LD-polyeten

Detaljnr	Till gänga	Dimensioner (mm)		Antal/förp.
		h	d	
18390*	3/8" x 24	11.1	9.2	4000
18304*	7/16" x 20	11.7	11.0	5000
18305	1/2" x 20	11.7	12.4	5000
18306*	9/16" x 18	12.1	14.0	5000
10348*	5/8" x 18	12.1	15.5	5000
16245*	11/16" x 16	12.1	17.1	5000
10349*	3/4" x 16	14.2	18.8	4000
16246*	13/16" x 16	14.2	20.4	4000
10702	7/8" x 14	16.5	22.0	2000
16247	1" x 14	16.5	25.0	2000
110002	1 1/16" x 12	19.0	26.7	2000
16248	1 3/16" x 12	19.0	29.8	1000
18311*	1 5/16" x 12	19.0	33.1	1000
16249*	1 7/16" x 12	19.0	36.4	1000
18405*	1 11/16" x 12	21.0	42.4	800
18406*	1 7/8" x 12	24.1	47.5	500
18407*	2 1/2" x 12	30.5	63.3	2500

Metrisk

Gul LD-polyeten

Detaljnr	Till gänga	Dimensioner (mm)		Antal/förp.
		h	d	
10839	M12	12.0	12.0	5000
10840	M14	14.1	14.0	5000
10080*	M16	16.5	16.0	5000
10841	M18	18.0	18.0	4000
10842	M20	20.0	20.0	2000
10224	M22	22.0	22.0	2000

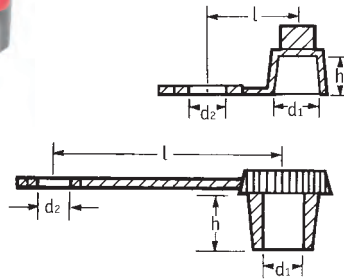
## Gratis prover

### Smörjnippelhattar

SR 1019

Röd LD-polyeten

- Effektivt och billigt skydd för smörjnippel



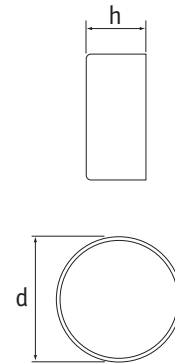
Detaljnr.	Typ	Dimensioner (mm)				Antal/förp.
		d1	d2	l	h	
12833	1	6.0	6.4	29.5	8.3	10000
61454	2	6.3	6.2	11.6	5.2	10000

### Rörskydd

SR 1340

Grå PVC

- Perfekta för trafiksignalsstolpar
- Flexibel PVC minskar risk för sprickor i skyddet och korrosion i stolpen
- Flexibiliteten gör att den har god passform

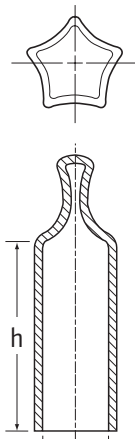


Detaljnr.	Dimensioner (mm)		Rörstorlek	Antal/förp.
	d	h		
462819	76.1	37.0	2 1/2"	250
462820	88.9	37.0	3"	200
462821	114.3	42.0	4"	125
462822	139.7	44.0	5"	80
462823	168.3	34.0	6"	75

### Multiflex huvar

SR 1072

Svart flexibel PVC



- Enkel montering och demontering
- Unik design som passar flera olika dimensioner
- Passar för släta eller gängade ytor

Detaljnr.	Till gänga			Dimensioner (mm)		Antal/ förp.
	Metrisk	UNF	BSP	d	h	
MFWA-090-025	M10	3/8"	1/8"	9.0-11.0	25.0	5000
MFWA-110-025	M12	7/16", 1/2"	1/4"	11.0-13.5	25.0	2000
MFWA-135-030	M14, M16	9/16", 5/8"	-	13.5-16.5	30.0	2000
MFWA-165-040	M18	3/4"	3/8"	16.5-20.0	40.0	1500
MFWA-200-050	M20, M22, M24	7/8"	1/2", 5/8"	20.0-24.0	50.0	1500

## Tappskydd

SR 1024/25/1124

### LD-polyeten

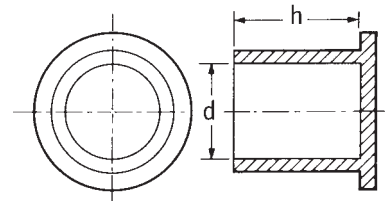
- Används inom fordonstillverkning och verkstadsindustri som skydd för exponerade tappar

Finns även i Svart Termoplastiskt gummi

### SR 1025 Röd LD-polyeten

Detaljnr.	Dimensioner			Antal/förp.
	d		h	
	(Tum)	(mm)	(mm)	
11098*	-	4.4	12.7	5000
51534*	1/4	6.4	41.3	7000
50454	5/16	7.9	19.1	10000
60273	-	7.5	38.1	5000
50620#	-	8.7	22.2	10000
10660	-	9.1	27.2	7000
11906	7/16	11.1	23.8	6000
51051	-	11.9	22.2	5000
10618	-	11.9	28.6	4000
11160	-	12.7	27.3	4000
10243	1/2	12.7	46.0	2500
11162	-	14.0	21.0	5000
10723	9/16	14.3	33.6	1500
10720	5/8	15.9	23.8	3000
60864	5/8	15.9	71.8	1000
10691	3/4	19.0	33.6	2000
10191	13/16	20.6	36.5	1200
10426	7/8	22.2	77.8	500
10959	-	23.5	55.5	600
11270	1	25.4	55.6	500
11292	1 1/8	28.6	62.8	400
11319	1 1/4	32.0	58.5	1000
60807	1 1/2	38.1	44.5	400

\* Svart PVC # Utan fläns



### SR 1024 Naturfärgad LD-polyeten

Metrisk med räfflat huvud

Detaljnr.	Dimensioner (mm)		Antal/förp.
	d	h	
12754	5.0	13.0	10000
12756	6.0	10.0	10000
12757	8.0	10.0	10000
12758	8.0	16.0	10000
12760	12.0	16.0	8000
10719	12.8	20.2	8000
12763	14.0	20.0	5000
12765	16.0	15.0	5000
12766	16.0	20.0	3000
12769	20.0	15.0	3000
12770	20.0	20.0	2000
12771	22.0	18.0	2000
12772	24.0	18.0	2000

### SR 1124 Naturfärgad LDPE Imperial

Detaljnr	BSP / NPT gänga	Dimensioner (mm)		Antal/förp.
		d	h	
E-3/8-A	3/8"	9.6	21.3	10000
E-1/2	1/2"	12.5	11.7	8000
E-9/16	9/16"	14.0	12.5	5900
E-3/4-CAT	3/4"	18.5	15.9	3000
E-13/16	13/16"	20.3	14.5	2500
E-7/8-CAT	7/8"	22.0	21.1	3500
E-1	1"	25.0	16.8	1500
E-1-3/16	1 3/16"	29.8	19.3	2000
E-1-7/8	1 7/8"	47.5	24.4	900
E-2-1/2	2 1/2"	63.3	30.7	350

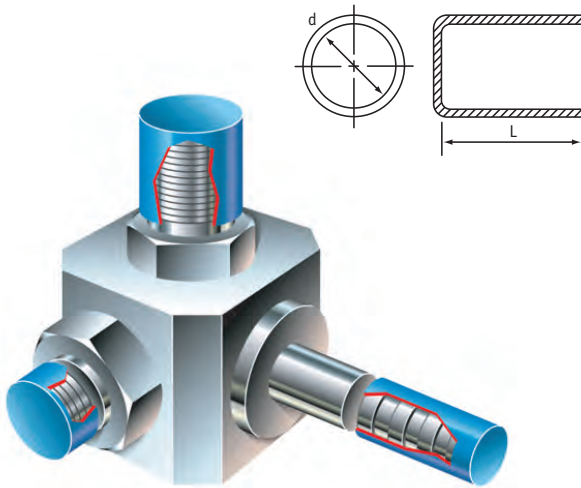
## Kåpor och Pluggar

### Ändskydd utan gänga

SR 1062

Blå LD-polyeten

- Stort utbud
- Idealiska för skydd av gängade eller släta rör och stag



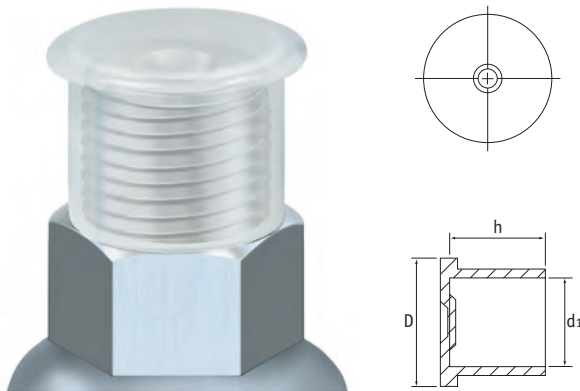
Detaljnr.	Dimensioner (mm)				Antal/förp.
	d		L		
	(Tum)	(mm)	(Tum)	(mm)	
110549	5/32	3.9	5/8	15.8	45000
110550	3/16	4.7	5/8	15.8	35000
110551	1/4	6.3	7/8	22.2	15000
110552	5/16	7.9	7/8	22.2	10000
110553	3/8	9.5	7/8	22.2	8500
110554	7/16	11.1	7/8	22.2	7000
110555	1/2	12.7	7/8	22.2	5000
110556	9/16	14.2	7/8	22.2	4000
110557	5/8	15.8	7/8	22.2	3500
110558	11/16	17.4	7/8	22.2	3000
110559	3/4	19.0	7/8	22.2	5000
110560	13/16	20.6	7/8	22.2	4500
110561	7/8	22.2	7/8	22.2	4000
110562	15/16	23.8	13/16	20.6	3500
110563	1	25.4	3/4	19.0	3500
110564	1 1/16	26.9	7/8	22.2	3000
110565	1 1/8	28.5	7/8	22.2	2500
110566	1 3/16	30.1	1	25.4	2000
110567	1 1/4	31.7	7/8	22.2	2000
110568	1 5/16	33.3	7/8	22.2	2000
110569	1 3/8	34.9	7/8	22.2	1800
110570	1 7/16	36.5	7/8	22.2	1600
110571	1 1/2	38.1	7/8	22.2	1500
110572	1 9/16	39.6	1	25.4	1200
110573	1 5/8	41.2	1	25.4	1900
110574	1 11/16	42.8	7/8	22.2	1200
110575	1 3/4	44.4	7/8	22.2	1200
110576	1 7/8	47.6	7/8	22.2	1000
110577	2	50.8	7/8	22.2	1000
110578	2 1/2	63.5	7/8	22.2	600

### Rak flänsplugg

SR 1116

Naturfärgad LDPE

- Används för att skydda BSP/NPT tappar med eller utan O-ringar



#### Imperial

Detaljnr.	BSP / NPT gänga	Dimensioner (mm)			Antal/förp.
		D	d <sub>1</sub>	h	
ECS-0125	1/8"	16.8	10.1	9.7	10000
ECS-0250	1/4"	20.6	13.5	13.5	9000
ECS-0375	3/8"	23.9	17.0	13.5	5000
ECS-0500	1/2"	27.7	21.2	18.3	3000
ECS-0750	3/4"	33.3	26.5	19.1	2000
ECS-1000	1"	39.6	33.3	23.6	1000
ECS-1250	1 1/4"	49.3	42.0	24.6	800
ECS-1500	1 1/2"	54.9	48.1	24.6	600
ECS-2000	2"	66.6	60.2	26.2	500

#### Metrisk

Detaljnr.	Till gänga	Dimensioner (mm)			Antal/förp.
		D	d <sub>1</sub>	h	
ECM-10	M10	17.5	9.8	9.7	10000
ECM-12	M12	19.5	11.8	12.0	7000
ECM-14	M14	21.5	13.7	12.0	5000
ECM-16	M16	23.5	15.7	12.0	5000
ECM-18	M18	25.5	17.7	12.0	3000
ECM-20	M20	27.5	19.7	14.1	3000
ECM-22	M22	29.5	21.7	14.1	3000
ECM-33	M33	40.4	32.6	17.5	2000
ECM-38	M38	44.5	37.6	19.0	1000
ECM-42	M42	49.5	41.7	19.0	1000