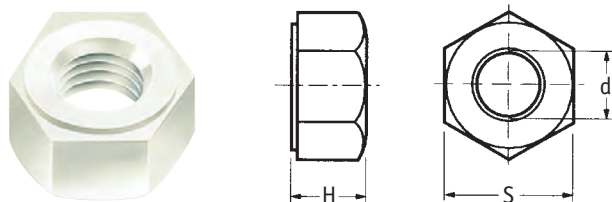


Sexkantig mutter

SR 1954

Naturfärgad Nylon 6.6

- Uppfyller: NF E 2403, ISO 4032, DIN 555, DIN 934

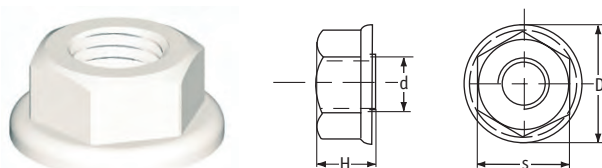


Detaljnr.	Dimensioner (mm)			Antal/förp.
	d	H	S	
0030140000VR	M2 x 0.4	1.6	4.0	1000
0030160000VR	M2.5 x 0.45	2.0	5.0	1000
0030010000VR	M3 x 0.5	2.4	5.5	1000
0030020000VR	M4 x 0.7	3.2	7.0	1000
0030030000VR	M5 x 0.8	4.2	8.0	1000
0030040000VR	M6 x 1.0	5.0	10.0	1000
0030050000VR	M8 x 1.25	6.5	13.0	1000
0030060000VR	M10 x 1.5	8.0	17.0	1000
0030070000VR	M12 x 1.75	10.8	18.0	500
0030080000VR	M14 x 2.0	12.8	21.0	500
0030090000VR	M16 x 2.0	14.8	24.0	250
0030110000VR	M20 x 2.5	18.0	30.0	250
0030120000VR	M24 x 3.0	21.5	36.0	250

Flänsmuttrar

SR 1966

Naturfärgad Nylon 6.6



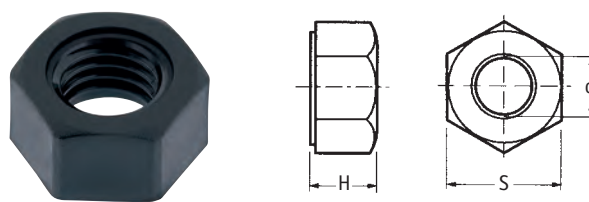
Detaljnr.	Dimensioner (mm)				Antal/förp.
	d	D	H	s	
43534	M3 x 0.5	7.0	3.2	5.5	1000
43535	M4 x 0.7	9.4	4.1	7.0	1000
43536	M5 x 0.8	11.0	5.1	8.0	1000
43537	M6 x 1.0	13.0	6.0	10.0	1000
43538	M8 x 1.25	17.0	8.0	13.0	1000
43539	M10 x 1.5	22.0	9.5	16.0	1000
0590070000VR	M12 x 1.75	28.0	14.4	18.7	1000
0590090000VR	M16 x 2.0	36.0	15.8	23.7	100

Sexkantig mutter

SR 1954

Svart Nylon 6.6

- Uppfyller: NF E 2403, ISO 4032, DIN 555, DIN 934

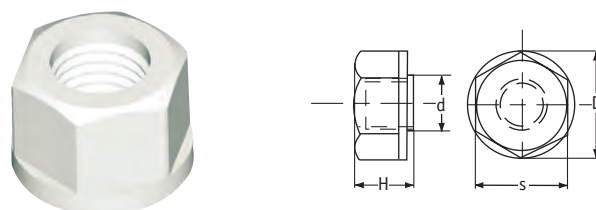


Detaljnr.	Dimensioner (mm)			Antal/förp.
	d	H	S	
0030010001VR	M3 x 0.5	2.4	5.5	100
0030020001VR	M4 x 0.7	3.2	7.0	100
0030030001VR	M5 x 0.8	4.2	8.0	100
0030040001VR	M6 x 1.0	5.0	10.0	100
0030050001VR	M8 x 1.25	6.5	13.0	100
0030060001VR	M10 x 1.5	8.0	17.0	100
0030070001VR	M12 x 1.75	10.8	18.0	100

Självläsande mutter

SR 1987

Naturfärgad Nylon 6.6



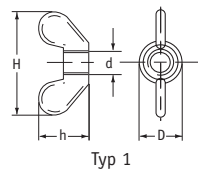
Detaljnr.	Dimensioner (mm)				Antal/förp.
	d	D	H	s	
0600010000VR	M3 x 0.5	6.9	4.7	6.0	1000
0600020000VR	M4 x 0.7	8.3	5.5	7.0	1000
0600030000VR	M5 x 0.8	9.5	6.5	8.0	1000
0600040000VR	M6 x 1.0	11.4	7.3	10.0	1000
0600050000VR	M8 x 1.25	16.2	9.0	14.0	1000

Vingmutter

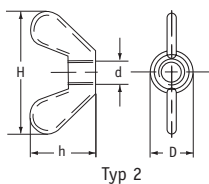
SR 1956

Naturfärgad Nylon 6.6

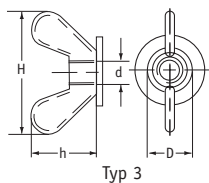
- Typ 1 - litet huvud
- Typ 2 - stora vingar för bättre grepp
- Typ 3 - inkl. fläns



Typ 1



Typ 2



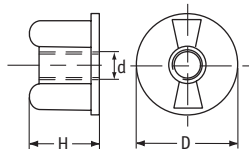
Typ 3

Detaljnr.	Typ	Dimensioner (mm)				Antal/förp.
		d	D	H	h	
0480510000VR	1	M3 x 0.5	10.0	25.0	12.0	1000
0480520000VR	1	M4 x 0.7	10.0	25.0	12.0	1000
0480530000VR	1	M5 x 0.8	10.0	25.0	12.0	1000
0480540000VR	1	M6 x 1.0	10.0	25.0	12.0	1000
0500020000VR	2	M4 x 0.7	14.0	35.0	22.0	1000
0500030000VR	2	M5 x 0.8	14.0	35.0	22.0	1000
0500040000VR	2	M6 x 1.0	14.0	35.0	22.0	1000
0500050000VR	2	M8 x 1.25	14.0	35.0	22.0	1000
467000	2	M10 x 1.5	17.0	41.0	25.0	1000
0510020000VR	3	M4 x 0.7	24.0	35.0	24.0	1000
0510030000VR	3	M5 x 0.8	24.0	35.0	24.0	1000
0510040000VR	3	M6 x 1.0	24.0	35.0	24.0	1000
0510050000VR	3	M8 x 1.25	24.0	35.0	24.0	1000

Vridmutter med fläns

SR 1988

Naturfärgad Nylon 6.6



Detaljnr.	Dimensioner (mm)			Antal/förp.
	d	D	H	
0680020000VR	M4 x 0.7	22.0	13.0	1000
0680030000VR	M5 x 0.8	22.0	13.0	1000
0680100000VR	M6 x 1.0	22.0	13.0	1000
467001	M8 x 1.25	22.0	13.0	1000



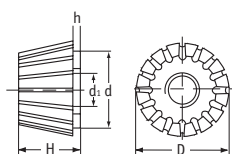
Gå in på vår hemsida!
www.ulinco.se

Mutter med räfflat tumgrepp

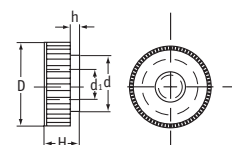
SR 1989

Naturfärgad Nylon 6.6

- Typ 1 - konisk
- Typ 2 - standard



Typ 1



Typ 2



Typ 1

Detaljnr.	Dimensioner (mm)					Antal/förp.
	d	D	d ₁	H	h	
0580020000VR	M4 x 0.7	16.0	14.0	12.0	1.0	1000
0580030000VR	M5 x 0.8	16.0	14.0	12.0	1.0	1000
0580040000VR	M6 x 1.0	16.0	14.0	12.0	1.0	1000
0580050000VR	M8 x 1.25	16.0	14.0	12.0	1.0	1000

Typ 2

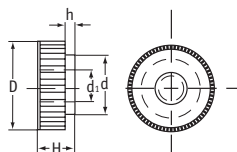
Detaljnr.	Dimensioner (mm)					Antal/förp.
	d	D	d ₁	H	h	
0760030000VR	M3 x 0.5	16.0	10.0	8.0	3.5	1000
0760040000VR	M4 x 0.7	16.0	10.0	8.0	3.5	1000
0760050000VR	M5 x 0.8	16.0	10.0	8.0	3.5	1000
0760060000VR	M6 x 1.0	16.0	10.0	8.0	3.5	1000
0660020000VR	M4 x 0.7	16.0	10.0	6.0	1.4	1000
0660030000VR	M5 x 0.8	16.0	10.0	6.0	1.4	1000
0660040000VR	M6 x 1.0	16.0	10.0	6.0	1.4	1000
0770040000VR	M4 x 0.7	20.0	10.0	8.0	3.5	1000
0770050000VR	M5 x 0.8	20.0	10.0	8.0	3.5	1000
0770060000VR	M6 x 1.0	20.0	10.0	8.0	3.5	1000
0770080000VR	M8 x 1.25	20.0	10.0	8.0	3.5	1000

Mutter med räfflat tumgrepp

SR 1989

Svart Nylon 6.6

- Typ 2 - standard



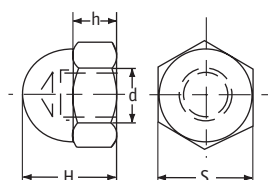
Detaljnr.	Dimensioner (mm)					Antal/förp.
	d	D	d ₁	H	h	
0660020001VR	M4 x 0.7	16.0	10.0	6.0	1.4	100
0660030001VR	M5 x 0.8	16.0	10.0	6.0	1.4	100
0660040001VR	M6 x 1.0	16.0	10.0	6.0	1.4	100

Kupolmuttrar

SR 1955

Naturfärgad Nylon 6.6

- Uppfyller: NF E 27-453, DIN 1587



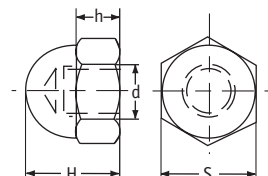
Detaljnr.	Dimensioner (mm)				Antal/förp.
	d	H	h	S	
0550010000VR	M3 x 0.5	6.0	3.0	5.5	1000
0550020000VR	M4 x 0.7	8.0	3.2	7.0	1000
0550030000VR	M5 x 0.8	10.0	4.0	8.0	1000
0550040000VR	M6 x 1.0	12.0	5.0	10.0	1000
0550050000VR	M8 x 1.25	15.0	6.5	13.0	1000
0550060000VR	M10 x 1.5	18.0	8.0	17.0	1000
0550070000VR	M12 x 1.75	22.0	10.0	19.0	500

Kupolmuttrar

SR 1955

Svart Nylon 6.6

- Uppfyller: NF E 27-453, DIN 1587



Detaljnr.	Dimensioner (mm)				Std Pack Qty
	d	H	h	S	
0550010001VR	M3 x 0.5	6.0	3.0	5.5	100
0550020001VR	M4 x 0.7	8.0	3.2	7.0	100
0550030001VR	M5 x 0.8	10.0	4.0	8.0	100
0550040001VR	M6 x 1.0	12.0	5.0	10.0	100
0550050001VR	M8 x 1.25	15.0	6.5	13.0	100
0550060001VR	M10 x 1.5	18.0	8.0	17.0	100
0550070001VR	M12 x 1.75	22.0	10.0	19.0	100