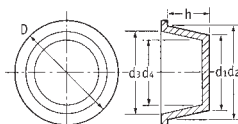


# Koniska skyddslock/pluggar

SR 1000

Röd LD-polyeten



- Billiga
- Används som lock eller pluggar
- Snabba att montera och demontera
- Över 100 storlekar
- Ger utmärkt skydd mot skador, smuts, fukt och korrosion under lagring och transport

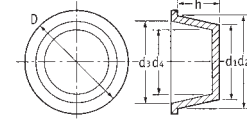
Detaljnr.	Dimensioner (mm)						Antal / förp.
	d1	d2	d3	d4	D	h	
10836	2.9	4.6	3.0	1.3	7.9	9.5	10000
10991	4.4	6.1	4.5	2.8	9.5	9.5	10000
50222	4.7	8.5	5.7	2.5	11.7	22.5	10000
12419	5.6	7.0	5.4	4.0	10.5	8.4	10000
10727	6.2	7.6	5.9	5.0	11.1	9.5	10000
12482	7.7	9.3	7.0	5.5	12.7	8.0	10000
10549	7.7	9.1	7.7	6.3	12.7	9.5	10000
10289	8.4	10.0	8.2	6.9	13.5	9.5	10000
12562	8.6	10.3	8.2	7.0	13.7	9.8	10000
12483	9.0	10.7	8.8	7.5	13.9	11.5	10000
464162	9.3	11.2	9.3	7.5	14.5	11.0	8000
10325	9.4	10.8	9.3	7.7	14.0	8.5	10000
110195	9.9	11.7	10.1	8.3	15.0	10.9	15000
10750	10.0	11.8	10.0	8.5	15.0	9.5	10000
464163	10.4	12.2	11.0	9.0	18.0	11.0	7000
12420	10.6	12.2	10.0	8.6	15.6	9.8	10000
10114	10.9	12.3	10.7	9.1	15.9	9.3	10000
12421	11.2	14.0	12.1	9.2	17.5	18.5	10000
12422	11.3	12.9	10.9	9.4	16.3	8.5	10000
10421	11.3	13.2	11.6	9.8	17.0	11.0	10000
10174	11.5	13.0	11.5	10.0	16.7	9.5	10000
464165	12.0	14.0	12.5	10.0	18.0	13.0	5000
12901	12.0	14.8	12.0	10.5	17.5	11.0	5000
10237	12.1	13.9	12.3	10.6	17.5	11.0	5000
12563	12.5	14.0	12.0	10.5	17.5	8.9	5000
110196	12.5	14.6	13.3	11.2	18.0	12.0	5000
15137	12.8	15.1	13.2	10.7	18.5	23.1	4000
10438	13.6	15.3	13.7	12.1	19.0	11.2	5000
10342	14.2	16.0	14.4	12.7	19.0	12.1	5000
10424	14.7	17.0	15.4	13.2	20.6	12.7	5000
12481	14.9	16.4	14.5	13.5	21.0	11.5	5000
12423	15.5	17.1	15.0	13.4	20.6	8.5	5000
464159	16.0	18.3	18.3	15.0	22.0	14.1	4000
12564	16.1	17.6	15.5	14.5	21.0	8.5	5000
11139	16.4	18.3	16.9	14.3	22.2	12.3	5000
12196	16.6	18.5	16.5	14.5	21.9	13.0	6000
110197	17.1	19.4	17.8	15.5	22.0	13.0	6500
12197	17.2	20.2	18.0	15.5	24.2	18.0	4000
110198	17.5	20.1	18.5	15.9	24.0	14.5	5000
11088	17.7	19.6	17.3	15.2	22.2	12.7	5000
10394	17.8	20.0	18.3	16.4	23.8	13.4	5000
12424	18.3	21.4	19.3	16.4	25.4	17.5	4000
10208	18.5	20.9	19.3	17.1	24.6	14.3	5000
10728	19.0	21.5	19.7	17.6	25.8	14.3	4000
12925	19.4	22.5	21.3	18.0	26.5	19.0	3000
110199	20.7	23.5	21.9	19.1	28.0	16.0	3500
12425	20.5	23.2	21.2	18.5	27.2	17.5	3000
52071	21.2	23.2	21.7	19.3	27.3	12.3	4000
10676	21.3	23.2	21.5	19.2	27.0	15.9	3000
110200	22.0	24.8	23.2	20.4	29.0	17.0	3000
10376	22.0	25.0	23.0	20.5	28.5	15.9	3000
12565	22.5	25.5	23.3	20.0	28.9	17.8	3000
12426	22.7	24.9	22.7	20.8	27.0	12.0	3000
10136	23.4	26.4	24.4	21.4	29.3	17.5	2500
12427	24.0	26.9	25.0	21.9	31.0	18.0	2000
12567	24.6	29.5	27.5	22.5	34.0	27.5	1500
10732	24.7	27.7	26.1	23.2	32.0	19.0	2000
110201	25.2	29.2	27.7	23.7	33.0	19.0	1500
12999	26.6	29.7	28.3	24.6	31.6	26.3	1500
110202	27.8	31.1	29.5	26.2	35.0	19.0	1800
10250	28.0	30.9	29.0	26.5	35.3	19.0	2000
11173	29.2	31.2	30.3	28.0	34.7	12.7	2000

Till gänga	
Som lock	Som plugg
M4	1/4" UNF
M6	M8, 5/16" UNF
1/4" UNF	3/8" UNF
M8	M10
M10 x 1, 1/8" BSP	M12 x 1, M12 x 1.5
3/8" UNF	M12
1/8" BSP	1/4" BSP, 1/2" UNF
M12	M14 x 1.5
7/16" UNF	9/16" UNF
1/4" BSP, 1/2" UNF	M16
M14	3/8" BSP
	M18 x 1.5
M16, 5/8" UNF	3/4" UNF
3/8" BSP	M20 x 1.5
M18 x 1.5, M18 x 2	1/2" BSP
3/8" BSP	M20
M18	1/2" BSP
3/4" UNF	M22 x 1.5
	M22 x 1.5, 7/8" UNF
7/8" JIC/UNF	M24
M20 x 2.5, 1/2" BSP	5/8" BSP
M22 x 1.5	1" UNF
M22	
7/8" UNF	
M24	3/4" BSP, M27, M26
M25, 1" UNF	M28, M30, 1 1/8" UNF
3/4" BSP	7/8" BSP
M27 x 1.5, M28 x 1.5	M25 x 1.5, 7/8" BSP
M27, M28	M30 x 1.5
M22 x 2	

FORTSÄTTNING PÅ NÄSTA SIDA

## Koniska skyddslock/pluggar FORTSÄTTNING

SR 1000



Detaljnr.	Dimensioner (mm)						Antal/ förp.
	d1	d2	d3	d4	D	h	
110203	29.8	31.6	30.0	27.9	37.0	17.0	1700
10272	30.0	32.6	30.7	27.5	36.7	15.2	2000
12428	30.5	33.3	31.1	28.4	37.0	14.5	2000
12568	31.1	34.3	32.0	29.3	38.1	17.5	1500
10154	31.1	34.4	32.8	29.8	38.1	19.0	1500
12569	31.6	36.3	34.0	29.8	40.2	24.1	1000
11167	33.3	34.4	32.8	31.4	38.1	9.5	2500
10181	33.3	37.2	35.6	31.7	41.6	22.2	1000
12480	33.9	38.3	36.5	31.9	42.3	24.5	1000
10838	33.9	37.3	35.8	32.0	42.2	12.3	2000
12198	34.9	36.4	35.2	33.1	42.7	8.2	2500
12570	35.9	40.2	37.5	33.2	44.1	24.5	1000
15138	36.3	38.3	37.0	34.6	42.3	12.0	1500
10491	36.9	40.6	39.0	35.0	44.0	22.5	1000
11115	38.6	40.6	39.0	37.1	44.5	12.7	1500
10485	39.6	42.7	41.1	38.2	47.6	18.5	1000
12429	40.8	44.7	41.8	37.7	49.0	24.0	500
10252	41.4	44.8	43.0	39.7	49.2	19.0	1000
11172†	42.5	44.8	43.0	40.7	50.7	12.6	1000
15139	43.4	48.5	47.0	42.0	53.3	24.5	600
10812	44.1	46.7	45.7	42.8	49.8	18.4	800
110204	44.4	47.7	46.1	42.8	51.0	19.0	1500
464160*	45.0	49.0	49.3	43.0	54.0	26.0	1000
10168	45.2	49.0	47.0	43.7	53.4	24.5	600
10439	45.9	46.3	45.0	44.3	50.8	9.5	1500
15136	46.0	50.0	48.0	44.3	54.0	24.8	500
110205	46.4	51.0	49.6	45.2	55.0	25.0	1500
12430	47.2	51.9	48.7	44.5	55.8	24.0	500
11131	47.5	50.3	49.0	45.2	54.0	25.0	500
10820	48.0	52.7	50.7	46.3	57.1	25.4	500
10086	48.6	51.2	48.9	46.7	55.5	18.7	500
12746	49.8	54.0	52.0	47.5	58.0	24.3	500
10624	51.1	54.4	52.0	47.7	57.0	25.0	500
10935	51.5	54.1	52.0	49.6	58.3	18.5	500
11047	53.5	57.0	55.3	51.2	62.4	25.1	400
12431	54.0	58.4	55.0	50.8	62.4	24.5	400
110206	54.2	58.6	57.0	52.6	65.0	26.0	900
10616	55.0	61.0	59.0	52.2	65.0	25.0	400
11168	55.4	58.8	57.2	53.7	65.0	25.1	400
11169	57.5	57.6	56.1	55.2	63.6	12.8	700
110207	58.4	62.8	61.1	56.7	67.0	25.0	900
11100	59.3	67.3	64.1	56.7	70.3	31.7	300
10249	59.6	62.6	61.0	57.0	66.7	24.6	300
11075	62.0	66.4	64.3	59.0	71.0	28.0	300
10292	63.3	69.8	67.8	61.5	73.0	25.4	400
10399	64.5	67.3	62.1	65.6	70.6	15.8	400
110208	67.1	70.4	68.7	65.4	75.0	19.0	1000
11064	68.1	70.9	69.3	66.3	74.6	19.0	400
10302	70.0	75.8	74.0	68.1	79.4	25.4	300
110209	72.4	75.7	74.1	70.8	83.0	19.0	800
10617	74.0	77.0	73.9	71.5	82.5	18.7	300
10550	74.0	76.8	73.4	70.0	80.0	24.4	600
11023	76.8	82.2	80.8	74.8	85.7	25.4	500
11170	77.1	80.7	78.2	74.8	85.7	19.0	300
11037	80.0	86.1	82.0	77.5	89.8	25.1	500
10353	84.2	90.8	88.3	82.7	94.5	28.0	500
110210	84.5	87.8	85.7	82.2	92.0	19.0	500

\* Gul LDPE

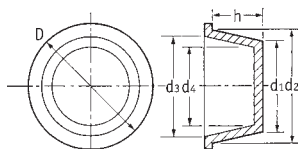
† Har sex rillor på sidan för extra säker passning vid användning som plugg

Till gänga	
Som lock M30 x 1.5, M30 x 2, 7/8" BSP	Som plugg M32x1.5, M33x1.5/2, 1 5/16" JIC/UNF, 1" BSP
M30 7/8" BSP	M33, 1" BSP 1 5/16" x 12 UNF 1 3/8" UNF, M36
M33, M32, 1 1/4" UNF 1 5/16" BSP	M36 1 5/16" BSP
1" BSP	M38, 1 1/8" BSP
1 3/8" UNF	1 1/8" BSP
M38 1 1/2" UNF M39, M40	1 1/4" BSP M42
1 1/4" BSP	M45 x 2
M45 x 1.5/2/3	M48 x 2, 1 7/8" JIC/UNF, 1 1/2" BSP
1 3/8" BSP	M48, 1 1/2" BSP M48
1 1/2" BSP	
M48, 1 1/2" BSP	M52
1 3/4" BSP	M56, M55
M58 M60 x 1.5/2/4, 2" BSP	2" BSP M60 x 1.5, M62 x 1.5
2" BSP	
	2 1/2" BSP
	M76, M75, 2 1/2" BSP
2 1/2" BSP	
3" BSP	3" BSP

FORTSÄTTNING PÅ NÄSTA SIDA

## Koniska skyddslock/pluggar FORTSÄTTNING

SR 1000



### BESTÄLLNINGGUIDE

**Vid användning som lock, ska måttet d 4 vara minst 0,5 mm mindre per cm än den diameter som ska täckas. Diametrar över 30 mm kan kräva större spel.**

**Vid användning som plugg ska måttet d 2 vara minst 0,5 mm större per cm än hålet. Diametrar över 30 mm kan kräva större spel.**

Detaljnr.	Dimensioner (mm)						Antal/ förp.
	d1	d2	d3	d4	D	h	
11171	85.3	88.0	85.5	82.9	92.0	19.0	250
12572	87.5	93.6	90.5	84.3	96.7	34.3	250
10304	88.1	93.3	89.9	85.1	96.5	28.6	300
10253	92.1	97.0	94.0	88.3	100.0	32.0	300
10697	93.5	100.3	97.8	89.9	107.5	26.5	400
464166††	96.5	102.0	101.0	94.0	110.0	31.0	200
12573	94.5	100.6	97.0	91.0	103.6	34.5	100
12199	98.0	102.0	98.5	94.8	107.2	24.7	400
10551	98.2	103.3	99.0	95.0	106.0	28.8	300
110785	101.0	107.0	103.0	98.0	109.0	28.6	300
10688	101.9	107.5	103.0	98.0	109.0	28.6	300
10771	106.7	111.7	107.4	107.4	113.3	28.6	250
10455	108.0	114.1	111.6	106.4	118.5	35.2	250
462570	109.0	113.0	111.0	106.0	123.0	27.0	175
10837	110.0	115.0	109.0	105.0	118.5	28.0	250
12574	111.5	117.6	115.0	107.5	122.0	35.0	250
10133	112.1	114.3	109.8	107.5	116.8	28.6	250
10355	124.0	128.0	125.0	121.0	134.0	23.0	150
12575	129.0	135.1	132.0	124.0	139.5	36.5	150
462571	133.0	137.0	134.2	130.2	143.0	22.0	150
12576	139.5	145.6	140.0	135.0	150.0	36.5	150
39665†	141.0	150.0	148.0	138.0	164.0	25.4	140
10356	146.8	151.0	148.6	142.8	159.5	33.0	100
39649	153.7	161.5	160.0	152.0	178.9	29.6	135
12577	157.0	163.0	160.0	152.0	167.5	36.5	100
39196*	202.9	203.8	198.8	198.0	218.7	32.7	100
462572	203.5	208.5	205.9	200.9	216.0	24.0	60
39666	216.0	223.6	223.0	213.0	241.5	29.1	100
39195*	252.2	257.8	247.8	247.2	272.5	33.8	50
39149*	304.2	308.4	299.4	299.2	322.6	33.9	30

\* Svart LDPE † Blå LDPE †† Naturfärgad LDPE



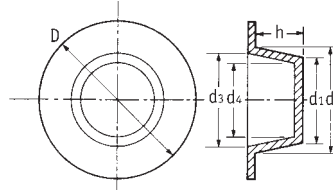
## Koniska skyddslock/pluggar med stor fläns

SR 1001

Röd LD-polyeten

- Kompletterar SR 1000-seriens lock och pluggar
- Stor fläns för bättre skydd och enklare borttagning

**Utökat  
sortiment**



Detaljnr.	Dimensioner (mm)						Antal/förp.
	d1	d2	d3	d4	D	h	
12432	7.6	9.3	7.7	6.3	18.4	9.5	10000
12433	10.7	12.3	10.7	9.1	22.0	9.5	10000
10420	11.3	13.2	11.6	9.8	29.0	11.0	10000
110831	11.4	12.4	10.5	9.5	15.0	7.0	2000
12434	13.5	15.5	13.2	11.4	30.0	9.5	5000
18349	13.6	15.4	13.8	12.2	22.2	11.1	8000
18351	14.7	16.9	15.4	13.2	25.4	12.7	6000
12435	17.5	20.0	18.5	16.1	34.9	14.3	3000
18356	19.1	21.5	19.9	17.6	38.1	14.3	2500
12436	21.9	25.0	22.0	18.9	48.0	17.5	1500
12134*	22.5	25.3	23.5	20.8	55.4	17.3	3000
18357	24.7	27.7	26.1	23.2	38.1	19.1	1500
12437	30.4	33.6	30.7	27.8	47.3	15.2	1400
18360	31.1	34.4	32.8	29.8	47.6	19.1	1000
12438	33.3	37.2	35.6	32.0	50.8	22.2	800
12439	36.9	40.6	39.0	35.0	54.2	22.5	800
18362	41.4	44.8	43.0	39.7	57.2	19.0	700
12441	47.2	51.9	48.7	44.5	72.0	24.0	400
18366	48.3	52.7	50.7	46.3	63.5	25.4	1200
18368	51.5	54.1	52.0	49.6	66.7	18.5	500
18373	55.0	61.0	59.0	52.5	76.7	25.0	300
18374	62.0	66.4	64.3	59.0	83.0	28.0	250

\* Finns med hål

Till gänga	
Som lock	Som plugg
1/8" BSP	1/4" BSP, 1/2" UNF
1/4" BSP, 1/2" UNF	M16, 5/8" UNF M18
M18	1/2" BSP
M30	M27, M30
M33, M32, 1 1/4" UNF	M33, M32, 1" BSP M35
M35, 1" BSP	M36, M38, 1 1/8" BSP 1 1/2" UNF
M38, 1 1/8" BSP	M39, M40, 1 1/4" BSP
M42, 1 1/4" BSP	M45
M48, 1 3/4" BSP	M52



## Brett sortiment

av kåpor och pluggar, kontakta oss så hjälper vi dig!

Ring 031-748 55 20  
eller besök [www.ulinco.se](http://www.ulinco.se)

## Över 1400 nyheter

### Koniska skyddslock/ pluggar

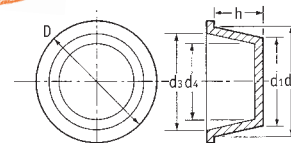
SR 1111

Blå LDPE

- Billiga
- Används som lock eller pluggar
- Snabba att montera och demontera
- Över 100 storlekar
- Ger utmärkt skydd mot skador, smuts, fukt och korrosion under lagring och transport



Utökad  
sortiment



Detaljnr.	Dimensioner (mm)						Antal/förp
	d1	d2	d3	d4	D	h	
1	2.9	4.6	3.0	1.3	7.9	10.3	5000
1S	3.5	4.6	3.0	1.3	7.9	6.4	5000
2	4.5	6.1	4.5	2.8	9.5	9.5	50000
3	5.3	6.8	4.9	3.2	9.5	9.5	50000
3-W	6.8	7.3	5.4	3.8	15.0	10.3	25000
4	5.3	7.0	5.3	3.8	11.1	9.5	45000
5	6.1	7.7	6.1	4.5	11.9	9.5	35000
6	6.7	8.5	7.0	5.2	11.9	9.5	30000
7	7.6	9.3	7.7	5.9	13.5	9.5	25000
7-W	7.6	9.3	7.7	5.9	17.3	9.5	18000
7-S	8.4	9.3	7.7	6.8	12.7	5.6	40000
8	8.4	10.1	8.4	7.0	14.3	9.5	22500
9	9.1	10.9	9.3	7.6	15.1	9.5	20000
10	9.9	11.7	10.1	8.3	15.9	9.5	15000
11	10.7	12.3	10.7	9.0	15.1	9.5	17000
12	11.4	13.0	11.4	9.8	15.9	10.3	12500
13	12.5	13.9	12.3	10.4	18.3	12.7	9000
13-SP	12.1	13.8	12.2	10.4	18.3	7.9	15000
13-W	12.1	13.9	12.3	10.4	22.2	12.7	7000
14	12.7	14.4	12.8	11.1	19.1	11.1	9000
16	13.5	15.8	14.1	11.9	19.1	11.8	7500
17	14.0	16.1	14.4	12.3	19.8	12.7	7500
18	15.0	17.2	15.4	13.2	22.2	13.5	5000
20	15.5	17.7	16.1	13.9	21.4	12.7	6000
21	16.3	18.5	16.9	14.6	22.2	12.7	5000
22	17.2	19.2	17.5	15.6	22.2	15.9	4000
23	17.5	19.9	18.4	15.9	23.8	15.9	4000
26	18.4	21.0	19.3	16.8	25.4	12.7	4000
26-L	18.4	21.0	19.3	16.8	24.6	15.0	8000
27	19.1	21.5	19.7	17.4	26.2	15.9	7000
28	20.4	23.1	21.5	18.4	27.8	19.1	5000
29	20.8	23.7	21.6	19.2	28.6	14.6	5500
30	21.7	24.7	23.0	19.5	28.6	19.1	4500
31	22.1	24.8	23.4	20.4	28.6	15.9	5000
35	22.7	26.4	24.8	21.1	29.4	19.1	4500
38	24.9	26.5	25.0	22.3	31.8	12.7	2500
40	24.5	27.7	26.0	22.9	31.8	19.1	3500
41	25.5	29.1	27.4	23.8	33.3	19.1	3500
42	28.2	31.2	30.0	26.4	38.5	19.1	2500
44	30.0	32.6	30.9	28.1	36.5	19.1	2500
45	31.1	34.3	32.9	29.5	38.1	19.1	2500
46	31.4	34.3	32.9	29.0	36.5	19.1	2500
47	32.8	32.3	32.8	31.2	38.1	19.1	2000
48	32.8	40.0	35.3	31.2	41.3	25.4	1500
49	33.3	37.3	35.6	31.7	41.3	19.1	2000
51	34.1	38.5	36.8	32.6	44.5	23.8	1500
53	36.8	40.6	39.0	35.2	44.5	19.1	2000
54	38.6	40.7	39.0	37.0	45.2	19.1	1700
K-5	38.7	38.7	37.7	36.7	44.5	12.7	2500
55	39.6	42.5	41.2	38.0	47.6	19.1	1500
56	40.8	44.5	42.8	39.8	49.2	19.1	1500
57	44.1	47.5	46.2	42.6	51.6	19.1	1200
58	45.9	49.7	48.1	44.3	54.0	25.4	900
59	45.7	46.4	44.7	44.1	51.6	12.7	2000
60	46.9	51.3	49.2	45.3	54.0	25.4	1000
62	48.3	53.0	51.2	46.7	57.2	25.4	850
63	50.3	55.1	53.6	48.6	57.2	25.4	800

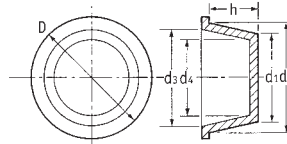
FORTSÄTTNING PÅ NÄSTA SIDA

## Koniska skyddslock/pluggar FORTSÄTTNING

SR 1111

Blå LDPE

**Utökad  
sortiment**



Detaljnr.	Dimensioner (mm)						Antal/förp.
	d1	d2	d3	d4	D	h	
65	51.2	54.5	52.9	49.7	58.7	19.1	1000
66	52.4	57.2	55.3	50.8	61.9	26.2	700
67	54.8	59.8	58.1	52.9	66.7	25.4	600
68	56.5	57.9	56.4	54.6	63.5	12.7	1200
70	54.1	61.6	60.2	51.9	63.5	25.4	700
71	58.4	63.1	61.0	56.8	66.7	25.4	600
73	60.8	66.2	64.5	59.2	66.7	25.4	600
74	61.7	67.2	65.5	61.5	69.9	19.1	700
75	58.7	67.3	65.7	57.0	69.9	25.4	750
76	62.4	69.9	68.2	60.8	73.0	25.4	600
77	65.0	68.3	66.7	63.5	73.0	19.1	700
78	67.2	71.3	69.2	69.2	76.2	12.7	1000
81	69.1	76.2	74.9	66.7	79.4	25.4	500
82	72.4	75.7	74.2	70.7	82.6	19.1	500
83	76.1	80.2	78.7	74.0	85.7	12.7	750
85	75.7	82.4	80.4	73.7	85.7	25.4	400
86	78.5	85.5	83.4	76.3	88.9	25.4	400
87	84.3	87.6	85.6	82.3	92.1	12.7	500
88	82.2	90.8	88.8	80.2	100.0	25.4	300
89	88.0	91.4	89.2	86.5	98.4	22.4	350
K-851	90.2	95.3	93.4	88.3	101.6	25.4	250
90	93.4	96.5	94.7	91.6	101.6	19.1	300
91	96.5	99.7	97.7	94.4	104.8	17.5	300
92	99.5	103.4	101.1	96.8	111.1	19.8	250
93	102.4	106.4	104.4	100.3	114.3	19.1	250
94	107.1	112.9	111.3	105.0	123.8	25.4	200
95	110.9	117.0	114.3	109.0	127.0	25.4	200
1100	124.7	129.3	127.3	122.7	139.7	26.2	250
1110	126.8	132.1	129.5	125.0	143.0	26.2	250
101	138.9	142.8	140.7	136.9	155.7	25.4	100
103	143.3	149.2	147.2	140.7	158.8	25.4	100
K-1249	141.0	150.0	148.0	138.0	164.1	25.4	140
FPL-6*	152.0	153.4	-	-	167.9	32.5	150
104	152.7	157.0	154.9	150.4	168.2	25.4	90
108	167.9	170.4	168.4	165.9	182.6	38.9	100
K-436	174.8	178.6	176.5	172.7	194.8	13.5	300
110	179.1	180.9	178.8	177.0	193.8	26.2	100
112	186.4	194.3	192.0	184.4	201.7	26.2	100
114	194.6	199.1	197.1	192.5	206.3	26.2	100
118	207.2	212.1	209.6	204.5	222.3	35.7	50
FPL-8*	204.0	205.0	-	-	218.7	32.8	100
120	213.4	218.4	215.9	210.8	228.6	35.7	50
123	220.2	221.7	219.1	217.2	231.9	38.9	50
126	230.1	237.7	234.7	225.8	250.4	45.2	50
FPL-10*	252.2	257.8	-	-	272.5	34.3	50
130	274.1	281.9	277.1	268.0	294.6	45.2	40
132	282.2	291.1	286.3	273.8	303.8	51.6	40
133	303.0	319.0	313.7	297.2	331.5	51.6	30
136	336.6	345.4	340.4	330.2	358.1	51.6	30

\* Svart

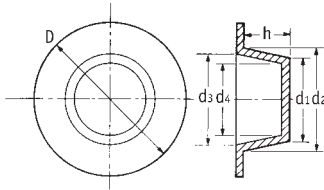
## Kåpor och Pluggar

### Koniska skyddslock/pluggar med stor fläns

SR 1115

Blå LD-polyeten

- Kompletterar SR 1000-seriens lock och pluggar
- Stor fläns för bättre skydd och enklare borttagning



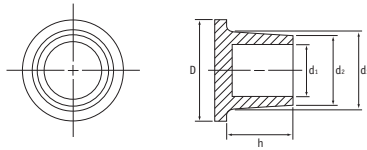
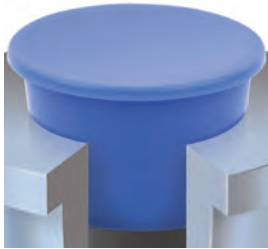
Detaljnr	Dimensioner (mm)						Antal/ förp.
	d1	d2	d3	d4	D	h	
LF-2	4.4	6.1	4.5	2.8	14.3	11.8	22000
LF-3	6.0	7.4	6.2	3.7	12.3	10.2	30000
LF-6	9.3	10.6	9.0	7.6	18.8	10.2	12000
LF-7	10.1	11.4	9.7	8.3	19.8	10.2	10000
LF-10	12.2	13.9	12.5	10.4	22.1	11.7	7000
LF-11X	14.4	16.0	14.7	12.7	24.1	12.5	5000
LF-12X	15.5	17.5	16.1	13.9	26.2	13.4	4500
LF-13	16.0	18.4	16.9	14.2	27.0	13.4	5000
LF-15X	18.4	20.6	19.4	16.8	29.0	15.0	3000
LF-17	20.8	23.4	22.0	18.8	31.8	15.8	2300
LF-19	24.1	25.9	24.3	22.2	34.1	18.2	4000
LF-28	43.9	48.0	46.4	41.9	58.7	18.9	1100

### Täckplugg

SR 1114

Blå LDPE

- Utformad för att passa BSP/NPT koniska hål



Detaljnr.	BSP / NPT gänga	Dimensioner (mm)					Antal/ förp
		d1	d2	d3	D	h	
EN-1/4"	1/4"	9.0	10.7	12.3	15.5	7.1	15000
EN-3/8"	3/8"	12.7	14.0	16.3	19.5	12.7	6500
EN-1/2"	1/2"	15.9	17.5	19.9	23.0	12.7	4000
EN-3/4"	3/4"	20.6	22.1	24.8	27.8	15.9	2500
EN-1"	1"	26.2	27.7	30.5	34.1	16.7	1500



## Gratis Prover!

Skickas omgående, kontakta oss så hjälper vi dig!

T:031-748 55 20

w: [www.ulinco.se](http://www.ulinco.se)