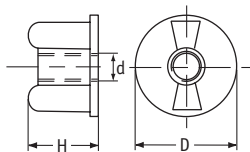


SR 1988

Vridmutter med fläns

Naturfärgad Nylon 6.6



Detaljnr.	Dimensioner (mm)			Antal/förp.
	d	D	H	
0680020000VR	M4 x 0.7	22.0	13.0	1000
0680030000VR	M5 x 0.8	22.0	13.0	1000
0680100000VR	M6 x 1.0	22.0	13.0	1000

SR 1989

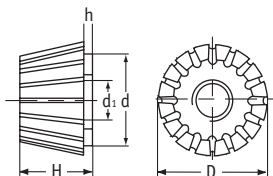
Mutter med räfflat tumgrepp

Naturfärgad Nylon 6.6

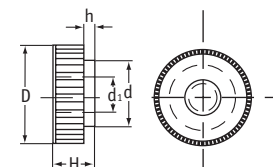
- Typ 1 - konisk
- Typ 2 - standard



Typ 1



Typ 2



Typ 1

Detaljnr.	Dimensioner (mm)					Antal/förp.
	d	D	d ₁	H	h	
0580020000VR	M4 x 0.7	16.0	14.0	12.0	1.0	1000
0580030000VR	M5 x 0.8	16.0	14.0	12.0	1.0	1000
0580040000VR	M6 x 1.0	16.0	14.0	12.0	1.0	1000
0580050000VR	M8 x 1.25	16.0	14.0	12.0	1.0	1000

Typ 2

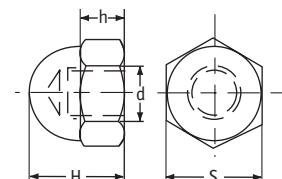
Detaljnr.	Dimensioner (mm)					Antal/förp.
	d	D	d ₁	H	h	
0760030000VR	M3 x 0.5	16.0	10.0	8.0	3.5	1000
0760040000VR	M4 x 0.7	16.0	10.0	8.0	3.5	1000
0760050000VR	M5 x 0.8	16.0	10.0	8.0	3.5	1000
0760060000VR	M6 x 1.0	16.0	10.0	8.0	3.5	1000
0660020000VR	M4 x 0.7	16.0	10.0	6.0	1.4	1000
0660030000VR	M5 x 0.8	16.0	10.0	6.0	1.4	1000
0660040000VR	M6 x 1.0	16.0	10.0	6.0	1.4	1000
0770040000VR	M4 x 0.7	20.0	10.0	8.0	3.5	1000
0770050000VR	M5 x 0.8	20.0	10.0	8.0	3.5	1000
0770060000VR	M6 x 1.0	20.0	10.0	8.0	3.5	1000
0770080000VR	M8 x 1.25	20.0	10.0	8.0	3.5	1000

SR 1955

Kupolmuttrar

Naturfärgad Nylon 6.6

- Uppfyller: NF E 27-453, DIN 1587



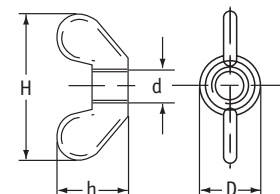
Detaljnr.	Dimensioner (mm)				Antal/förp.
	d	H	h	S	
0550010000VR	M3 x 0.5	6.0	3.0	5.5	1000
0550020000VR	M4 x 0.7	8.0	3.2	7.0	1000
0550030000VR	M5 x 0.8	10.0	4.0	8.0	1000
0550040000VR	M6 x 1.0	12.0	5.0	10.0	1000
0550050000VR	M8 x 1.25	15.0	6.5	13.0	1000
0550060000VR	M10 x 1.5	18.0	8.0	17.0	1000
0550070000VR	M12 x 1.75	22.0	10.0	19.0	500

SR 1956

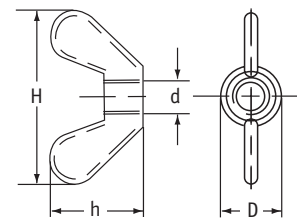
Vingmutter

Naturfärgad Nylon 6.6

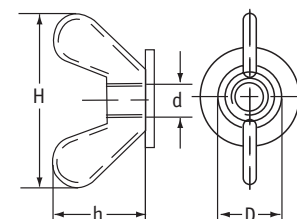
- Typ 1 - litet huvud
- Typ 2 - stora vingar för bättre grepp
- Typ 3 - inkl. fläns



Typ 1



Typ 2



Typ 3



Detaljnr.	Typ	Dimensioner (mm)				Antal/förp.
		d	D	H	h	
0480510000VR	1	M3 x 0.5	10.0	25.0	12.0	1000
0480520000VR	1	M4 x 0.7	10.0	25.0	12.0	1000
0480530000VR	1	M5 x 0.8	10.0	25.0	12.0	1000
0480540000VR	1	M6 x 1.0	10.0	25.0	12.0	1000
0500020000VR	2	M4 x 0.7	14.0	35.0	22.0	1000
0500030000VR	2	M5 x 0.8	14.0	35.0	22.0	1000
0500040000VR	2	M6 x 1.0	14.0	35.0	22.0	1000
0500050000VR	2	M8 x 1.25	14.0	35.0	22.0	1000
0500060000VR	2	M10 x 1.5	17.0	41.0	25.0	1000
0510020000VR	3	M4 x 0.7	24.0	35.0	24.0	1000
0510030000VR	3	M5 x 0.8	24.0	35.0	24.0	1000
0510040000VR	3	M6 x 1.0	24.0	35.0	24.0	1000
0510050000VR	3	M8 x 1.25	24.0	35.0	24.0	1000