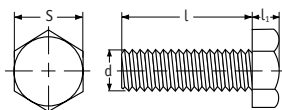


SR 1901

## Skrivar med sexkantigt huvud

Naturfärgad PVDF

- Uppfyller: ISO 4017, NF EN 24017, DIN 933

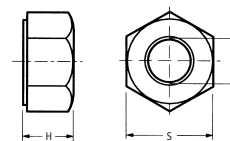


SR 1905

## Sexkantig mutter

Naturfärgad PVDF

- Uppfyller: NF E 2403, ISO 4032, DIN 555, DIN 934



Detaljnr.	Dimensioner (mm)				Antal/förp.
	d	L	l <sub>1</sub>	S	
0020090500VR	M3 x 0.5	10.0	2.0	5.5	100
0020120500VR	M3 x 0.5	16.0	2.0	5.5	100
0020130500VR	M3 x 0.5	20.0	2.0	5.5	100
0020180500VR	M4 x 0.7	10.0	2.8	7.0	100
0020210500VR	M4 x 0.7	16.0	2.8	7.0	100
0020220500VR	M4 x 0.7	20.0	2.8	7.0	100
0020240500VR	M4 x 0.7	30.0	2.8	7.0	100
0020290500VR	M5 x 0.8	12.0	3.5	8.0	100
0020310500VR	M5 x 0.8	16.0	3.5	8.0	100
0020330500VR	M5 x 0.8	20.0	3.5	8.0	100
0020340500VR	M5 x 0.8	25.0	3.5	8.0	100
0020350500VR	M5 x 0.8	30.0	3.5	8.0	100
0020420500VR	M6 x 1.0	10.0	4.0	10.0	100
0020430500VR	M6 x 1.0	12.0	4.0	10.0	100
0020450500VR	M6 x 1.0	16.0	4.0	10.0	100
0020460500VR	M6 x 1.0	20.0	4.0	10.0	100
0020480500VR	M6 x 1.0	25.0	4.0	10.0	100
0020520500VR	M6 x 1.0	40.0	4.0	10.0	100
0020690500VR	M8 x 1.25	20.0	5.3	13.0	100
0020710500VR	M8 x 1.25	30.0	5.3	13.0	100
0020730500VR	M8 x 1.25	40.0	5.3	13.0	100
0020750500VR	M8 x 1.25	60.0	5.3	13.0	100
0020860500VR	M10 x 1.5	20.0	6.4	17.0	100
0021270500VR	M10 x 1.5	40.0	6.4	17.0	100
0020890500VR	M10 x 1.5	50.0	6.4	17.0	100
0020900500VR	M10 x 1.5	60.0	6.4	17.0	100
0021020500VR	M12 x 1.75	40.0	7.5	19.0	100
0021040500VR	M10 x 1.5	60.0	7.5	19.0	100

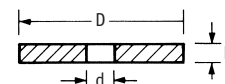
Detaljnr.	Dimensioner (mm)			Antal/förp.
	d	H	S	
0030010500VR	M3 x 0.5	2.4	5.5	100
0030030500VR	M5 x 0.8	4.2	8.0	100
0030040500VR	M6 x 1.0	5.0	10.0	100
0030050500VR	M8 x 1.25	6.5	13.0	100
0030060500VR	M10 x 1.5	8.0	17.0	100
0030070500VR	M12 x 1.75	10.8	18.0	100
0030090500VR	M16 x 2.0	14.8	24.0	100

SR 1907

## Bricka, DIN 125

Naturfärgad PVDF

- Måttolerans enl. angiven DIN standard.



Detaljnr.	Storlek	Dimensioner (mm)			Antal/förp.
		d	D	H	
0050150500VR	M4	4.3	9.0	0.8	100
0050230500VR	M5	5.3	10.0	1.0	100
0050320500VR	M6	6.4	12.0	1.6	100
0050410500VR	M8	8.4	16.0	1.6	100
0050470500VR	M10	10.5	20.0	2.0	100
0050550500VR	M12	13.0	24.0	2.5	100
0050650500VR	M16	17.0	30.0	3.0	100